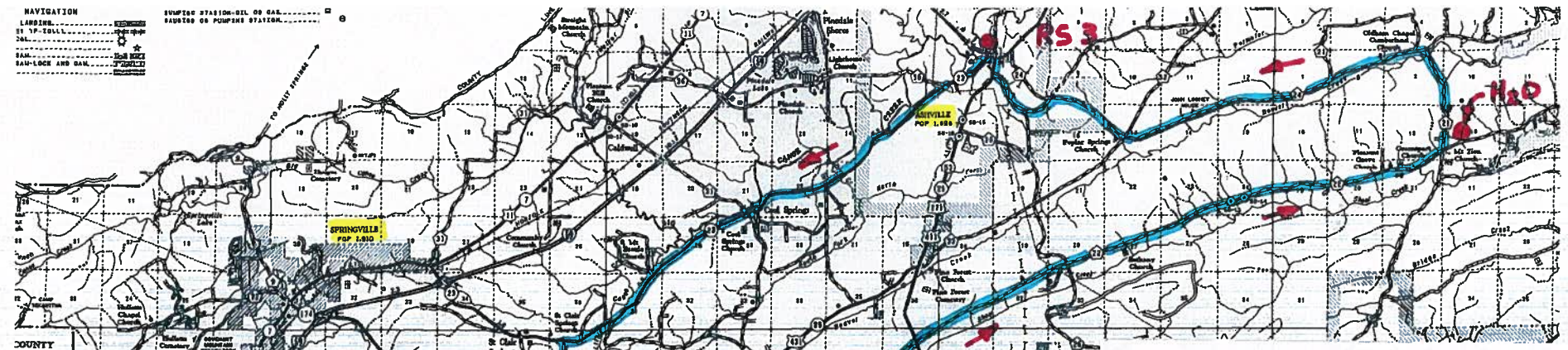
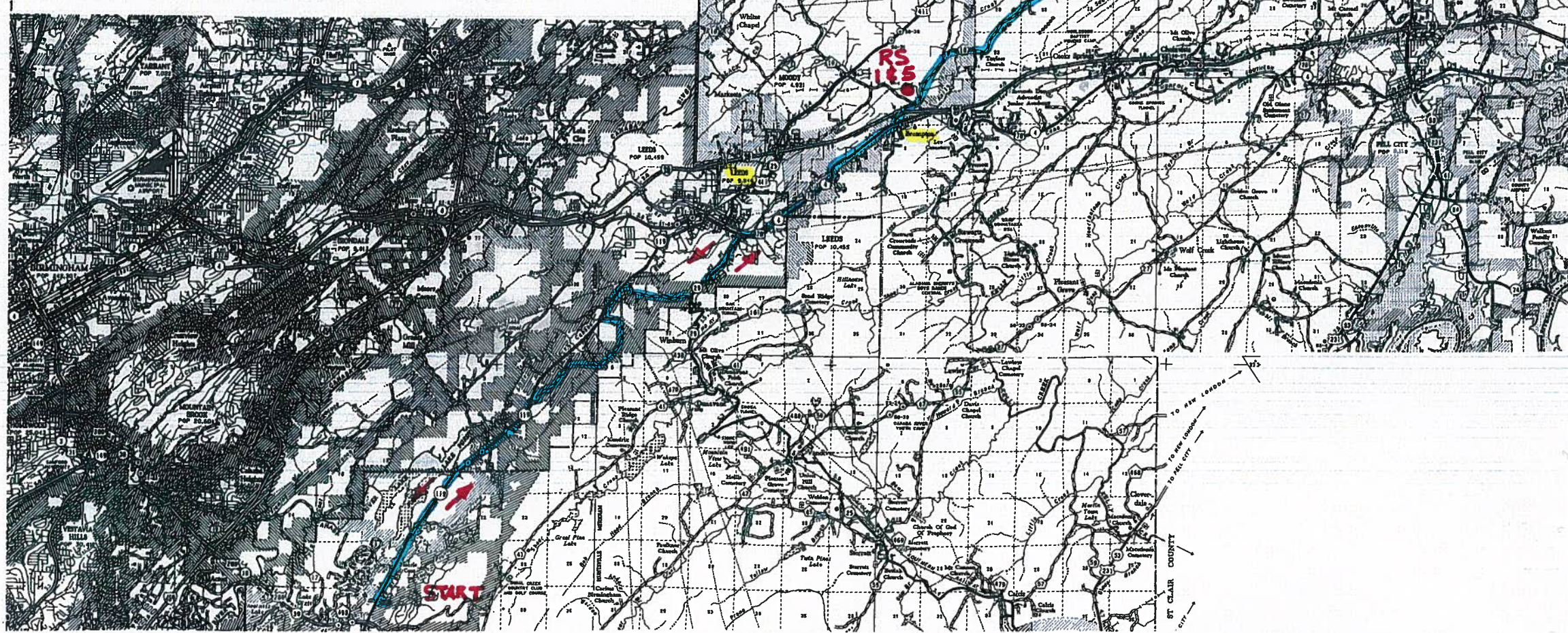


**American Diabetes Association
Tour de Cure Century Route
May 21, 2011**



Start @ St. Vincent's One Nineteen	Mileage
R SR 119 N	0
R Foster Road	5.5
R Mountain View Lane	7.3
R SR 119 N	9
R Elliott Ln	9.9
L SR 25	11.5
R US 78	13.5
L I20 Connector becomes Kelly Ck Rd	17.4
RS #1	
Continue on Kelly Ck (CR 10)	
L Hwy 174	24.4
R Tucker Rd	26.3
L Alabama St. (High School Drive)	26.7
L to remain on Alabama St. and go around school into town	28
R US 411	28
RS #2	
R Shoal Creek (CR22)	32.8
L Macedonia Rd (CR 21)	48.4
L Greensport (CR 24)	50.3
L to remain on Greensport	57.5
R 231 (5 th St./411/25/23)	59
RS #3	
R SR 23	59.5
L Correctional Facility Road	69
L US 411 to pick up RS #4	73
R US 411 if bypassing RS #4	73
L Alabama St (by Exxon Station)	76.5
R to remain on Alabama St.	76.6
R Tucker Road	78.5
L Hwy 174	79
R Kelly Ck Rd (CR10)	81
RS #5	
R US 78	87.5
L SR 25	91.5
R Elliott Ln	93.5
L SR 119 S	95
L Mountain View Lane	96
L Foster Road	98
L SR 119 S	99.5
Back to start	105